





Hoofdstuk 5

Overige woningbouwcomponenten

Bevochtigers - Easyflex - instortkanaal VIK - gevel- en dakdoorvoeren -
ventielen & WTW-geïsoleerde kanalen

Prijslijst Hoofdstuk 5 - Overige woningbouwcomponenten

Bevochtigers

| | | |
|-----------------------------------------------------------------------------------|-----------------------------------------|---|
|  | HomEvap Lucht- bevochtiger | 5 |
| | Koeler | 5 |
| | Direct | 5 |
| | Combi Comfort | 5 |
|  | HomEvap Accessoires | 5 |


Gevel en dakdoorvoeren

Dakdoorvoeren

| | | |
|-------------------------------------------------------------------------------------|----------------------------------------------------------------------------|----|
|  | Renson Dakdoorvoeren | 10 |
|  | Ventilatie- dakdoorvoer dubbelwandig aluminium | 7 |
|  | Ventilatie- dakdoorvoer enkelwandig gegalvaniseerd | 8 |
|  | Ventilatie- dakdoorvoer enkelwandig kunststof Megavent | 9 |
|  | WTW- dakdoorvoer dubbelwandig aluminium geïsoleerd | 9 |


Gevelroosters

| | | |
|-------------------------------------------------------------------------------------|------------------------------------------------------------|----|
|  | Renson Gevelrooster | 10 |
|  | VBRB Velu Gevelrooster regeninslagvrij RVS | 11 |


| | | |
|-----------------------------------------------------------------------------------|----------------------------------------------------------------|----|
|  | VRBIO Schoepenrooster voor instortkanaal, Velu | 11 |
|-----------------------------------------------------------------------------------|----------------------------------------------------------------|----|


| | | |
|-----------------------------------------------------------------------------------|--------------------------------------------|----|
|  | VK Zelfsluitende klep Zehnder | 11 |
|-----------------------------------------------------------------------------------|--------------------------------------------|----|

Geveldoorvoeren

| | | |
|-----------------------------------------------------------------------------------|--------------------------------|----|
|  | Velu Aanzuigtuit VAT | 11 |
|-----------------------------------------------------------------------------------|--------------------------------|----|

Geïsoleerde kanalen Spiralo

| | | |
|-----------------------------------------------------------------------------------|--------------------------------------------------------|----|
|  | Dampdicht (9 mm) Dampdicht geïsoleerd | 12 |
|-----------------------------------------------------------------------------------|--------------------------------------------------------|----|


| | | |
|------------------------------------------------------------------------------------|--------------------------------------------------------------|----|
|  | Dampdicht PLUS (13 mm) Dampdicht geïsoleerd | 14 |
|------------------------------------------------------------------------------------|--------------------------------------------------------------|----|

Wavin kunststof instortstelsysteem


| | | |
|-------------------------------------------------------------------------------------|--------------------------------------------|----|
|  | Ventiza PVC venti- latiekanalen | 16 |
|-------------------------------------------------------------------------------------|--------------------------------------------|----|


| | | |
|-------------------------------------------------------------------------------------|----------------------------------|----|
|  | Ventiza PVC lijmoffen | 16 |
|-------------------------------------------------------------------------------------|----------------------------------|----|

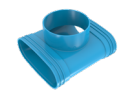
| | | |
|--|--------------------------------------|----|
| | Ventiza PVC overschuifmof | 16 |
|--|--------------------------------------|----|

| | | |
|-------------------------------------------------------------------------------------|--------------------------------|----|
|  | Ventiza PVC bochten | 16 |
|-------------------------------------------------------------------------------------|--------------------------------|----|

| | | |
|--|----------------------------------------|----|
| | Ventiza PVC staande bochten | 16 |
|--|----------------------------------------|----|

| | | |
|-------------------------------------------------------------------------------------|------------------------------------|----|
|  | Ventiza PVC eindstukken | 16 |
|-------------------------------------------------------------------------------------|------------------------------------|----|

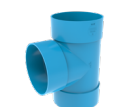
| | | |
|-------------------------------------------------------------------------------------|---------------------------------|----|
|  | Ventiza PVC verlopen | 16 |
|-------------------------------------------------------------------------------------|---------------------------------|----|

| | | |
|-------------------------------------------------------------------------------------|-------------------------------------------------|----|
|  | Ventiza PVC T-stukken ovaal-rond | 16 |
|-------------------------------------------------------------------------------------|-------------------------------------------------|----|

| | | |
|-------------------------------------------------------------------------------------|----------------------------------------|----|
|  | Ventiza PVC-T stukken ovaal | 16 |
|-------------------------------------------------------------------------------------|----------------------------------------|----|

| | | |
|-------------------------------------------------------------------------------------|-----------------------------------|----|
|  | Ventiza PVC eindkappen | 17 |
|-------------------------------------------------------------------------------------|-----------------------------------|----|

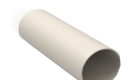
| | | |
|--|---------------------------------------|----|
| | Ventiza PVC T-stukken rond | 17 |
|--|---------------------------------------|----|

| | | |
|-------------------------------------------------------------------------------------|-------------------------------------------------|----|
|  | Ventiza PVC T-stukken rond-ovaal | 17 |
|-------------------------------------------------------------------------------------|-------------------------------------------------|----|


| | | |
|--------------------------------------------------------------------------------------|--------------------------------------------------------------------------------------|----|
|  | Wavin AS+ Geluidsarme Beugels voor fixatie van standleidingen | 17 |
|--------------------------------------------------------------------------------------|--------------------------------------------------------------------------------------|----|

| | | |
|---------------------------------------------------------------------------------------|--------------------------------|----|
|  | Spleetvullende lijm | 17 |
|---------------------------------------------------------------------------------------|--------------------------------|----|

Easyflex instortkanaal

| | | |
|---------------------------------------------------------------------------------------|----------------------------|----|
|  | Easyflex buizen | 18 |
|---------------------------------------------------------------------------------------|----------------------------|----|


| | | |
|---------------------------------------------------------------------------------------|-------------------------------------|----|
|  | Easyflex koppel- stukken | 18 |
|---------------------------------------------------------------------------------------|-------------------------------------|----|

| | | |
|---------------------------------------------------------------------------------------|----------------------------------------------------------|----|
|  | Easyflex kanaal 140 x 60 cm + accessoires | 18 |
|---------------------------------------------------------------------------------------|----------------------------------------------------------|----|

| | | |
|---------------------------------------------------------------------------------------|----------------------------------------|----|
|  | Easyflex diverse toebehoren | 18 |
|---------------------------------------------------------------------------------------|----------------------------------------|----|

Instortkanaal staal, VIK

| | | |
|---------------------------------------------------------------------------------------|------------------------------|----|
|  | Aansluitstuts VIK | 21 |
|---------------------------------------------------------------------------------------|------------------------------|----|

| | | |
|---------------------------------------------------------------------------------------|-------------------------------|----|
|  | Bocht 90° stromend | 19 |
|---------------------------------------------------------------------------------------|-------------------------------|----|

| | | |
|-------------------------------------------------------------------------------------|----------------------------------------------------------------|-----------|
|  | Bocht 60° stromend | 19 |
|  | Bocht 45° stromend | 19 |
|  | Bocht 45° haaks | 19 |
|  | Deksel PVC afsluitdeksel t.b.v. stuts | 20 |
|  | Einddeksel staal | 20 |
|  | Deksel met stuts staal | 20 |
|  | Instortkanaal galvaniseerd | 19 |
|  | Instortpot met vast stalen deksel IPS | 22 |
|  | Instortpot dubbele aftakking met vast stalen deksel IPS | 22 |
|  | Lepe hoek links, rechts, symmetrisch | 23 |
|  | Manchetverbinding voor kanaal | 20 |
|  | T-stuk 90° stromend | 20 |
|  | T-stuk 45° haaks | 20 |

| | | |
|-------------------------------------------------------------------------------------|--------------------------------------------------|-----------|
|  | RHOR rechthoekig op rond | 24 |
| | BZV (brede zijde vlak) | |
|  | RHOR rechthoekig op rond | 24 |
| | SZV (smalle zijde vlak) | |
|  | RHOR rechthoekig op rond | 24 |
| | symmetrisch | |
|  | RHV rechthoekig verloop | 22 |
|  | Zijaansluiting rechthoekig op rechthoekig | 17 |
|  | Zijaansluiting rond op rechthoekig | 17 |

Prefab-schoorstenen


| | | |
|-------------------------------------------------------------------------------------|---------------------------|-----------|
|  | Prefabschoorstenen | 26 |
|-------------------------------------------------------------------------------------|---------------------------|-----------|

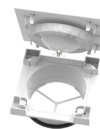





Ventielen en Wasemkappen

Kanaal- en overspraakdempers

| | | |
|-------------------------------------------------------------------------------------|-------------------------------------|-----------|
|  | Kanaaldemper Inno Solid-Air® | 25 |
|  | Zehnder overspraakdemper SGD | 25 |
| | t.b.v. ventiel STB/STC | |

Ventilatieventielen voor lucht-afvoer, kunststof

| | | |
|-------------------------------------------------------------------------------------|-------------------------------------|-----------|
|  | BKAV Brink ventilatieventiel | 27 |
|-------------------------------------------------------------------------------------|-------------------------------------|-----------|

| | | |
|---------------------------------------------------------------------------------------|---------------------------------------------------|-----------|
|  | Renson ventilatieventiel | |
| | SQair ventielen | |
| | Extractie | 29 |
| | SQair Pulsie ventielen | |
| | Designroosters XD25-50, XD 75 | 26 |
|  | DVLF DEC ventilatieventiel | 27 |
|  | STC Zehnder ventilatieventiel | 28 |
|  | STK Zehnder ventilatieventiel | 28 |
|  | Zelfregelend STR Zehnder ventilatieventiel | 28 |
|  | VVK-M Velu ventilatieventiel | 27 |

Ventilatieventielen voor lucht-afvoer, staal

| | | |
|---------------------------------------------------------------------------------------|----------------------------------------------------|-----------|
|  | Kgeb Velu ventilatieventiel | 27 |
|  | Kso & Kso-j Velu ventilatieventiel | 27 |
|  | Nk & Nk-j Velu ventilatieventiel | 27 |
|  | Stb 1 & Stb 2 Zehnder ventilatieventiel | 28 |



STV 28
Zehnder
ventilatieventiel

**Ventilatieventielen voor
luchttoevoer, kunststof**



BKTV 30
Brink
ventilatieventiel



RONDO 30
DEC ventilatieventiel



**ComfoValve Luna
verpakt S125** 31
Zehnder
ventilatieventiel

**Ventilatieventielen voor
luchttoevoer, staal**



KTS 30
Velu ventilatieventiel



NE & NE-J 30
Velu ventilatieventiel



STQA 30
Velu ventilatieventiel

BEVOCHTIGERS

V14 - HomeVap

Bevochtigers en koeler

| model | prijs | artikelnummer | % |
|-----------------------------------------|----------|---------------|-----|
| HomEvap Koeler RF | 986,00 | 5230000306 | V14 |
| HomEvap Bevochtiger zonder preheater RF | 986,00 | 5230000709 | V14 |
| HomEvap Bevochtiger RF | 1.342,00 | 5230000305 | V14 |
| HomEvap Bevochtiger PLUS RF | 1.458,00 | 5230000710 | V14 |
| HomEvap Bevochtiger 600 RF | 1.384,00 | 5230000711 | V14 |
| HomEvap Bevochtiger 600 PLUS RF | 1.500,00 | 5230000712 | V14 |
| HomEvap All Season RF | 1.774,00 | 5230000307 | V14 |
| HomEvap All Season PLUS RF | 1.890,00 | 5230000713 | V14 |
| HomEvap All Season 600 RF | 1.816,00 | 5230000714 | V14 |
| HomEvap All Season 600 PLUS RF | 1.932,00 | 5230000715 | V14 |
| HomEvap Standalone bevochtiger RF | 1.969,00 | 5230000406 | V14 |
| HomEvap Standalone koeler RF | 1.734,00 | 5230000407 | V14 |



| | | | |
|---------------------------------------------------|----------|------------|-----|
| HomEvap Koeler RF EB | 881,00 | 5230000391 | V14 |
| HomEvap Bevochtiger zonder preheater RF EB | 881,00 | 5230000716 | V14 |
| HomEvap Bevochtiger RF EB | 1.238,00 | 5230000392 | V14 |
| HomEvap Bevochtiger RF EB en T3 buitensensor | 1.248,00 | | V14 |
| HomEvap Bevochtiger PLUS RF EB | 1.354,00 | 5230000717 | V14 |
| HomEvap Bevochtiger 600 RF EB | 1.269,00 | 5230000718 | V14 |
| HomEvap Bevochtiger PLUS 600 RF EB | 1.385,00 | 5230000719 | V14 |
| HomEvap All Season RF EB | 1.669,00 | 5231000052 | V14 |
| HomEvap All Season PLUS RF EB | 1.785,00 | 5230000720 | V14 |
| HomEvap All Season 600 RF EB | 1.711,00 | 5230000721 | V14 |
| HomEvap All Season 600 PLUS RF EB | 1.827,00 | 5230000722 | V14 |
| HomEvap Basic bevochtiger voor master slave RF EB | 903,00 | 5230000723 | V14 |
| HomEvap Basic koeler voor master slave RF EB | 583,00 | 5230000724 | V14 |
| HomEvap Geïsoleerde filterbox | 151,00 | 5230000394 | V14 |
| HomEvap G4 bagfilter | 45,00 | 5280000574 | V14 |



| | | | |
|--------------------------------------|----------|------------|-----|
| HomEvap Koeler | 986,00 | 5230000725 | V14 |
| HomEvap Bevochtiger zonder preheater | 986,00 | 5230000726 | V14 |
| HomEvap Bevochtiger | 1.342,00 | 5230000727 | V14 |
| Homevap Bevochtiger PLUS | 1.354,00 | 5230000728 | V14 |
| HomEvap Bevochtiger 600 | 1.395,00 | 5230000729 | V14 |
| HomEvap Bevochtiger 600 PLUS | 1.500,00 | 5230000730 | V14 |
| HomEvap All Season | 1.774,00 | 5230000731 | V14 |
| HomEvap All Season PLUS | 1.890,00 | 5230000732 | V14 |
| HomEvap All Season 600 | 1.816,00 | 5230000733 | V14 |
| HomEvap All Season 600 PLUS | 1.932,00 | 5230000734 | V14 |
| HomEvap Standalone bevochtiger | 1.969,00 | 5230000735 | V14 |
| HomEvap Standalone koeler | 1.734,00 | 5230000736 | V14 |

 = standaard artikel, uit voorraad leverbaar (aantallen fluctueren)

BEVOCHTIGERS

V14 - HomeVap

Bevochtigers en koeler

| accessoires | prijs | artikelnummer | % |
|---------------------------------------------|--------|---------------|-----|
| HomEvap Vervangingscassette bevochtiger | 237,00 | 5280000434 | V14 |
| HomEvap vervangingsmatrix bevochtiger | 86,00 | 5280000582 | V14 |
| HomEvap Vervangingscassette koeler | 178,00 | 5280000435 | V14 |
| HomEvap Vervangingscassette koeler 600 | 184,00 | | V14 |
| HomEvap vervangingsmatrix koeler | 103,00 | 5280000583 | V14 |
| HomEvap vervangingsmatrix koeler 600 | 107,00 | | V14 |
| HomEvap LegioSafe filter | 131,00 | 5280000584 | V14 |
| HomEvap vervangingscartridge LegioSafe LS23 | 72,00 | 5280000585 | V14 |
| HomEvap Powerplate | 104,00 | 5280000575 | V14 |
| HomEvap Hoofdprintplaat | 308,00 | 5280000436 | V14 |
| HomEvap Waterklep 24vdc | 63,00 | 5280000437 | V14 |
| HomEvap Afvoer | 30,00 | 5280000438 | V14 |
| HomEvap kanaalsensor | 197,00 | 5280000586 | V14 |
| HomEvap Retoursensor | 202,00 | 5280000577 | V14 |
| HomEvap Draadloos bedieningspaneel AF3 | 204,00 | 5280000576 | V14 |
| HomEvap bedieningspaneel AF9/10 | 210,00 | 5280000587 | V14 |
| HomEvap bedieningsdisplay | 171,00 | 5280000588 | V14 |

 = standaard artikel, uit voorraad leverbaar (aantallen fluctueren)

Dakdoorvoeren

V04 - Burgerhout

Dubbelwandig aluminium ventilatie 125

| omschrijving | prijs | artikelnummer | % |
|--------------------------------|-------|---------------|------|
| DW Aluvent 125 mm | 90,35 | 5160000009 | V04a |
| Plakplaat alu 125 mm | 27,21 | 5160000052 | V04a |
| RBB inst. pan 1 pans F (zwart) | 92,19 | 5160000062 | V04a |
| Scharnierkap PP 125 mm (zwart) | 6,28 | 5160000064 | V04a |
| Dakbeschotheugel 125 mm | 6,97 | 5160000001 | V04a |



Dubbelwandig aluminium ventilatie 150

| omschrijving | prijs | artikelnummer | % |
|--------------------------------|--------|---------------|------|
| DW Aluvent 150 mm | 121,34 | 5160000010 | V04a |
| Plakplaat alu 150 mm | 36,04 | 5160000054 | V04a |
| RBB inst. pan 1 pans F (zwart) | 92,19 | 5160000062 | V04a |
| Scharnierkap PP 150 mm (zwart) | 24,36 | 5160000065 | V04a |
| Dakbeschotheugel 150 mm | 6,87 | 5160000002 | V04a |



Dubbelwandig aluminium ventilatie 180

| omschrijving | prijs | artikelnummer | % |
|----------------------------------------|--------|---------------|------|
| DW Aluvent 180 mm | 128,90 | 5160000011 | V04a |
| Plakplaat alu 180 en 200 mm t.b.v. WTW | 56,40 | 5160000058 | V04a |
| Scharnierkap 180/200 mm (zwart) | 13,92 | 5160000067 | V04a |
| Dakbeschotheugel 180 mm | 8,82 | 5160000003 | V04a |



Dubbelwandig aluminium ventilatie 200

| omschrijving | prijs | artikelnummer | % |
|----------------------------------------|--------|---------------|------|
| DW Aluvent 200 mm | 160,34 | 5160000012 | V04a |
| Plakplaat alu 180 en 200 mm t.b.v. WTW | 56,40 | 5160000058 | V04a |
| Scharnierkap 180/200 mm (zwart) | 13,92 | 5160000067 | V04a |
| Dakbeschotheugel 180 mm | 8,82 | 5160000003 | V04a |



Dakhellingen mogelijk tussen 15° en 55° olopend met 5°.
 Prijzen overige loodslabben op aanvraag.
 Bij bestelling de dakhelling opgeven!

 = standaard artikel, uit voorraad leverbaar (aantallen fluctueren)

Dakdoorvoeren

V04 - Burgerhout

Enkelwandig gegalvaniseerd ventilatie 250

| omschrijving | prijs | artikelnummer | % |
|---------------------------------------|--------|---------------|------|
| Gegalvaniseerde ventilatie ddv 250 mm | 261,70 | 5160000013 | V04a |
| Plakplaat aluminium 250 mm | 87,09 | 5160000055 | V04a |
| Dakbeschotbeugel 250 mm | 23,78 | 5160000005 | V04a |

Enkelwandig gegalvaniseerd ventilatie 300

| omschrijving | prijs | artikelnummer | % |
|---------------------------------------|--------|---------------|------|
| Gegalvaniseerde ventilatie ddv 300 mm | 291,90 | 5160000014 | V04a |
| Plakplaat aluminium 300 mm | 96,42 | 5160000056 | V04a |
| Dakbeschotbeugel 300 mm | 34,22 | 5160000006 | V04a |

Enkelwandig gegalvaniseerd ventilatie 350

| omschrijving | prijs | artikelnummer | % |
|---------------------------------------|--------|---------------|------|
| Gegalvaniseerde ventilatie ddv 350 mm | 339,02 | 5160000015 | V04a |
| Plakplaat aluminium 350 mm | 101,14 | 5160000057 | V04a |

Enkelwandig gegalvaniseerd ventilatie 400

| omschrijving | prijs | artikelnummer | % |
|---------------------------------------|--------|---------------|------|
| Gegalvaniseerde ventilatie ddv 400 mm | 411,03 | 5160000016 | V04a |
| Plakplaat gegalvaniseerd 400 mm | 158,23 | 5160000059 | V04a |

Dakhellingen mogelijk tussen 15° en 55° oplopend met 5°.
 Prijzen overige loodslabben op aanvraag.
 Bij bestelling de dakhelling opgeven!



 = standaard artikel, uit voorraad leverbaar (aantallen fluctueren)

Dakdoorvoeren

V04 - Burgerhout

Megavent 125

| omschrijving | prijs | artikelnummer | % |
|--------------------------------|-------|---------------|------|
| Megavent 125 mm (zwart) | 61,84 | 5160000047 | V04a |
| Plakplaat aluminium 125 mm | 27,21 | 5160000052 | V04a |
| RBB inst. pan 1 pans F (zwart) | 92,19 | 5160000062 | V04a |
| Scharnierkap PP 125 mm (zwart) | 6,28 | 5160000064 | V04a |
| Dakbeschotheugel 125 mm | 6,97 | 5160000001 | V04a |



WTW dakdoorvoer 150/135

| omschrijving | prijs | artikelnummer | % |
|-----------------------------------------------|--------|---------------|------|
| WTW dakdoorvoerconstructie 150/135 mm (zwart) | 132,71 | 5160000081 | V04a |
| Plakplaat NPV/RPM (aluminium 160 mm) | 43,36 | 5240000072 | V04a |
| Scharnierkap 180/200 mm (zwart) | 13,92 | 5160000067 | V04a |
| Dakbeschotheugel 150 mm | 6,87 | 5160000002 | V04a |



WTW dakdoorvoer 180/150

| omschrijving | prijs | artikelnummer | % |
|----------------------------------------------------|--------|---------------|------|
| WTW dakdoorvoerconstructie 180/150 mm (zwart) | 132,71 | 5160000083 | V04a |
| WTW dakdoorvoerconstructie 180/150 mm (terracotta) | 151,72 | 5160000082 | V04a |
| Plakplaat alu 180 en 200 mm t.b.v. WTW | 56,40 | 5160000058 | V04a |
| Scharnierkap 180/200 mm (zwart) | 13,92 | 5160000067 | V04a |
| Dakbeschotheugel 180 mm | 8,82 | 5160000003 | V04a |



WTW dakdoorvoer 180/160

| omschrijving | prijs | artikelnummer | % |
|---------------------------------------------|--------|---------------|------|
| WTW ddv constructie 180/160 mm (zwart) | 198,49 | 5160000149 | V04a |
| WTW ddv constructie 180/160 mm (terracotta) | 304,25 | 5160000150 | V04a |
| Plakplaat alu 180 en 200 mm t.b.v. WTW | 56,40 | 5160000058 | V04a |
| Scharnierkap 180/200 mm (zwart) | 13,92 | 5160000067 | V04a |
| Dakbeschotheugel 180 mm | 8,82 | 5160000003 | V04a |



WTW dakdoorvoer 200/180

| omschrijving | prijs | artikelnummer | % |
|-----------------------------------------------|--------|---------------|------|
| WTW dakdoorvoerconstructie 200/180 mm (zwart) | 153,25 | 5160000084 | V04a |
| Plakplaat alu 180 en 200 mm t.b.v. WTW | 56,40 | 5160000058 | V04a |
| Scharnierkap 180/200 mm (zwart) | 13,92 | 5160000067 | V04a |
| Dakbeschotheugel 200 mm | 9,77 | 5160000004 | V04a |



Dakhellingen mogelijk tussen 15° en 55° oplopend met 5°.
Prijzen overige loodslabben op aanvraag.
Bij bestelling de dakhelling opgeven!

 = standaard artikel, uit voorraad leverbaar (aantallen fluctueren)

Dakdoorvoeren

V16 - Renson

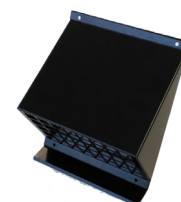
| omschrijving | prijs | artikelnummer | % |
|------------------------------------------------------------|--------|---------------|-----|
| Dakdoorvoer Ø133/150 mm plat dak | 118,21 | 5320000001 | V16 |
| Dakdoorvoer Ø133/150 mm hellend dak | 136,30 | 5320000000 | V16 |
| Dakdoorvoer Ø166/150 mm plat dak | 173,61 | 5310000017 | V16 |
| Dakdoorvoer Ø166/150 mm hellend dak | 181,54 | 5310000016 | V16 |
| Daktoevoer All Weather (zwart) | 239,11 | 5320000002 | V16 |
| Epdm kraag | 26,65 | 5320000003 | V16 |
| Opstaande doorvoer plat dak | 57,27 | 5320000011 | V16 |
| Renson design dakdoorvoer Flex (zwart) | 153,04 | 5320000012 | V16 |
| Renson design dakdoorvoer voor leien daken (zwart) | 125,70 | 5320000013 | V16 |
| Renson design dakdoorvoer voor pannendaken (terracotta) | 134,92 | 5320000014 | V16 |
| Renson design dakdoorvoer voor pannendaken (zwart) | 134,92 | 5320000015 | V16 |
| Renson design XL dakdoorvoer Flex (zwart) | 270,87 | 5320000016 | V16 |
| Renson design XL dakdoorvoer voor leien daken (zwart) | 245,91 | 5320000017 | V16 |
| Renson design XL dakdoorvoer voor pannendaken (terracotta) | 252,76 | 5320000018 | V16 |
| Renson design XL dakdoorvoer voor pannendaken (zwart) | 252,76 | 5320000019 | V16 |
| Universele dakpan (terracotta) | 90,28 | 5320000020 | V16 |
| Universele dakpan (zwart) | 99,93 | 5320000021 | V16 |



Geveldoorvoeren

V16 - Renson

| geveldoorvoeren | | | |
|-----------------------------------|--------|---------------|-----|
| omschrijving | prijs | artikelnummer | % |
| Geveldoorvoer Ø160/150 mm (bruin) | 128,05 | 5320000004 | V16 |
| Geveldoorvoer Ø160/150 mm (grijs) | 121,22 | 5320000005 | V16 |
| Geveldoorvoer Ø160/150 mm (wit) | 128,05 | 5320000006 | V16 |



| geveldoorvoerroosters | | | |
|--------------------------------------|--------|---------------|-----|
| omschrijving | prijs | artikelnummer | % |
| Geveldoorvoerrooster Ø150 mm (wit) | 120,59 | 5320000007 | V16 |
| Geveldoorvoerrooster Ø150 mm (zwart) | 120,59 | 5320000008 | V16 |
| Geveldoorvoerrooster Ø180 mm (wit) | 150,54 | 5320000009 | V16 |
| Geveldoorvoerrooster Ø180 mm (zwart) | 150,54 | 5320000010 | V16 |

 = standaard artikel, uit voorraad leverbaar (aantallen fluctueren)

Geveldoorvoeren

V04 - Velu

Buitenluchtrooster VBRB

| buitenluchtrooster RVS Bol | | | |
|----------------------------|-------|---------------|-----|
| omschrijving | prijs | artikelnummer | % |
| VBRB 100 | 25,40 | 5160000068 | V04 |
| VBRB 125 | 31,20 | 5160000069 | V04 |
| VBRB 150 | 36,90 | 5160000070 | V04 |
| VBRB 160 | 42,75 | 5160000071 | V04 |



Buitenluchtrooster VRBI

| buitenluchtrooster, staal (RAL 9010) | | | |
|--------------------------------------|-------|---------------|------|
| Omschrijving | prijs | artikelnummer | % |
| VRBIO 220 x 80 mm | 82,40 | 5110000137 | V02a |



Aanzuigtuit VAT



| D | VAT | | VAT geïsoleerd | | VAT (RAL 9005) | | VAT geïsoleerd (RAL 9005) | | % |
|-----|-------|---------------|----------------|---------------|----------------|---------------|---------------------------|---------------|-----|
| | prijs | artikelnummer | prijs | artikelnummer | prijs | artikelnummer | prijs | artikelnummer | |
| 150 | 75,50 | 5160000133 | | | 92,85 | 5160000135 | | | V04 |
| 160 | 73,35 | 5160000137 | | | 93,35 | 5160000138 | | | V04 |
| 180 | 77,00 | 5160000139 | | | 94,65 | 5160000140 | | | V04 |

V11 - Zehnder

Buitenluchtrooster VK

| zelfsluitende kleppen | | | |
|-----------------------|--------|---------------|------|
| omschrijving | prijs | artikelnummer | % |
| VK 100 | 23,40 | 5160000132 | V11a |
| VK 125 | 30,90 | 5160000073 | V11a |
| VK 200 | 83,00 | 5160000074 | V11a |
| VK 250 | 88,20 | 5160000075 | V11a |
| VK 315 | 90,70 | 5160000076 | V11a |
| VK 355 | 94,60 | 5160000077 | V11a |
| VK 400 | 114,00 | 5160000078 | V11a |
| VK 450 | 151,00 | 5160000079 | V11a |
| VK 500 | 210,00 | 5160000080 | V11a |



 = standaard artikel, uit voorraad leverbaar (aantallen fluctueren)

Geïsoleerd kanaal

V07 - Dampdicht geïsoleerd Spiralo



| D | SKDI buis L = 2000 | | | SBGDI bocht 90° | | | SBGDI bocht 45° | | |
|-----|--------------------|---------------|-----|-----------------|---------------|------|-----------------|---------------|------|
| | prijs | artikelnummer | % | prijs | artikelnummer | % | prijs | artikelnummer | % |
| 100 | 68,35 | 5140000636 | V17 | 26,30 | 5140000607 | V17a | 21,05 | 5140000606 | V17a |
| 125 | 75,65 | 5140000637 | V17 | 27,20 | 5140000609 | V17a | 22,80 | 5140000608 | V17a |
| 150 | 81,95 | 5140000638 | V17 | 34,70 | 5140000611 | V17a | 26,30 | 5140000610 | V17a |
| 160 | 89,35 | 5140000639 | V17 | 34,70 | 5140000613 | V17a | 28,40 | 5140000612 | V17a |
| 180 | 92,50 | 5140000640 | V17 | 51,55 | 5140000615 | V17a | 41,00 | 5140000614 | V17a |
| 200 | 96,70 | 5140000641 | V17 | 51,55 | 5140000617 | V17a | 36,80 | 5140000616 | V17a |
| 250 | 124,00 | 5140000642 | V17 | 84,05 | 5140000619 | V17a | 63,05 | 5140000618 | V17a |
| 315 | 171,30 | 5140000643 | V17 | 117,70 | 5140000601 | V17a | 79,85 | 5140000600 | V17a |
| 355 | 207,00 | 5140000644 | V17 | 138,70 | 5140000603 | V17a | 100,90 | 5140000602 | V17a |
| 400 | 241,65 | 5140000645 | V17 | 163,90 | 5140000605 | V17a | 117,70 | 5140000604 | V17a |



| D | VHDI koppelstuk | | | SMDI Sluitband | | | VTBDI Ophangbeugel | | |
|-----|-----------------|---------------|------|----------------|---------------|------|--------------------|---------------|------|
| | prijs | artikelnummer | % | prijs | artikelnummer | % | prijs | artikelnummer | % |
| 100 | 21,40 | 5140000688 | V17a | 4,90 | 5140000664 | V17a | 5,50 | 5140000677 | V17a |
| 125 | 21,85 | 5140000689 | V17a | 5,00 | 5140000665 | V17a | 6,45 | 5140000678 | V17a |
| 150 | 24,30 | 5140000690 | V17a | 5,25 | 5140000666 | V17a | 7,15 | 5140000679 | V17a |
| 160 | 25,20 | 5140000691 | V17a | 5,55 | 5140000667 | V17a | 7,35 | 5140000680 | V17a |
| 180 | 27,85 | 5140000692 | V17a | 5,80 | 5140000668 | V17a | 7,80 | 5140000681 | V17a |
| 200 | 28,25 | 5140000693 | V17a | 6,00 | 5140000669 | V17a | 8,55 | 5140000682 | V17a |
| 250 | 33,35 | 5140000695 | V17a | 6,50 | 5140000670 | V17a | 10,10 | 5140000683 | V17a |
| 315 | 39,35 | 5140000697 | V17a | 6,95 | 5140000671 | V17a | 12,60 | 5140000684 | V17a |
| 355 | 49,45 | 5140000698 | V17a | 7,20 | 5140000672 | V17a | 13,40 | 5140000685 | V17a |
| 400 | 54,40 | 5140000699 | V17a | 7,50 | 5140000673 | V17a | 14,15 | 5140000686 | V17a |

= standaard artikel, uit voorraad leverbaar (aantallen fluctueren)

Geïsoleerd kanaal

V07 - Dampdicht geïsoleerd Spiralo



STDI

| d1 = d2 | d3 | | | | | | | | | | | |
|---------------|-------|---------------|------|-------|---------------|------|-------|---------------|------|-------|---------------|------|
| | 100 | | | 125 | | | 150 | | | 160 | | |
| | prijs | artikelnummer | % | prijs | artikelnummer | % | prijs | artikelnummer | % | prijs | artikelnummer | % |
| 100 | 31,55 | 5140000646 | V17a | | | | | | | | | |
| 125 | | | | 33,65 | 5140000647 | V17a | | | | | | |
| 150 | | | | 46,25 | 5140000648 | V17a | 46,25 | 5140000649 | V17a | | | |
| 160 | 46,25 | 5140000650 | V17a | 48,35 | 5140000651 | V17a | | | | 50,45 | 5140000652 | V17a |
| 180 | | | | | | | | | | 65,15 | 5140000653 | V17a |
| 200 | | | | 63,05 | 5140000655 | V17a | | | | 67,25 | 5140000656 | V17a |
| 250 | | | | | | | | | | 92,50 | 5140000658 | V17a |
| 315 | | | | | | | | | | | | |
| 355 | | | | | | | | | | | | |
| 400 | | | | | | | | | | | | |

| d1 = d2 | d3 | | | | | | | | | | | |
|---------------|-------|---------------|------|-------|---------------|------|--------|---------------|------|--------|---------------|------|
| | 180 | | | 200 | | | 250 | | | 315 | | |
| | prijs | artikelnummer | % | prijs | artikelnummer | % | prijs | artikelnummer | % | prijs | artikelnummer | % |
| 100 | | | | | | | | | | | | |
| 125 | | | | | | | | | | | | |
| 150 | | | | | | | | | | | | |
| 160 | | | | | | | | | | | | |
| 180 | 67,25 | 5140000654 | V17a | | | | | | | | | |
| 200 | | | | 71,45 | 5140000657 | V17a | | | | | | |
| 250 | | | | | | | 100,90 | 5140000659 | V17a | | | |
| 315 | | | | | | | 109,30 | 5140000660 | V17a | 117,70 | 5140000661 | V17a |
| 355 | | | | | | | | | | | | |
| 400 | | | | | | | | | | | | |

| d1 = d2 | d3 | | | | | |
|---------------|--------|---------------|------|--------|---------------|------|
| | 355 | | | 400 | | |
| | prijs | artikelnummer | % | prijs | artikelnummer | % |
| 100 | | | | | | |
| 125 | | | | | | |
| 150 | | | | | | |
| 160 | | | | | | |
| 180 | | | | | | |
| 200 | | | | | | |
| 250 | | | | | | |
| 315 | | | | | | |
| 355 | 201,75 | 5140000662 | V17a | | | |
| 400 | | | | 239,55 | 5140000663 | V17a |

 = standaard artikel, uit voorraad leverbaar (aantallen fluctueren)

Geïsoleerd kanaal

V07 - Dampdicht geïsoleerd Spiralo



SDNDI

| d1 | verlopend naar d2 | | | | | | | | | | | |
|-----|-------------------|---------------|------|-------|---------------|------|-------|---------------|------|-------|---------------|------|
| | 125 | | | 150 | | | 160 | | | 180 | | |
| | prijs | artikelnummer | % | prijs | artikelnummer | % | prijs | artikelnummer | % | prijs | artikelnummer | % |
| 150 | 29,45 | 5140000620 | V17a | | | | | | | | | |
| 160 | 29,45 | 5140000621 | V17a | 31,55 | 5140000622 | V17a | | | | | | |
| 180 | | | | | | | 33,65 | 5140000623 | V17a | | | |
| 200 | 37,85 | 5140000624 | V17a | 39,95 | 5140000625 | V17a | 39,95 | 5140000626 | V17a | 42,05 | 5140000627 | V17a |
| 250 | | | | | | | 50,45 | 5140000628 | V17a | | | |
| 315 | | | | | | | 58,85 | 5140000630 | V17a | | | |
| 355 | | | | | | | 70,45 | 5140000632 | V17a | | | |
| 400 | | | | | | | | | | | | |

| d1 | verlopend naar d2 | | | | | | | | | | | |
|-----|-------------------|---------------|------|-------|---------------|------|-------|---------------|------|-------|---------------|------|
| | 200 | | | 250 | | | 315 | | | 355 | | |
| | prijs | artikelnummer | % | prijs | artikelnummer | % | prijs | artikelnummer | % | prijs | artikelnummer | % |
| 150 | | | | | | | | | | | | |
| 160 | | | | | | | | | | | | |
| 180 | | | | | | | | | | | | |
| 200 | | | | | | | | | | | | |
| 250 | 52,55 | 5140000629 | V17a | | | | | | | | | |
| 315 | | | | 60,95 | 5140000631 | V17a | | | | | | |
| 355 | | | | | | | 85,15 | 5140000633 | V17a | | | |
| 400 | | | | | | | 86,20 | 5140000634 | V17a | 96,70 | 5140000635 | V17a |

V07 - Dampdicht geïsoleerd Spiralo PLUS



| D | SKDI PLUS Buis L = 2000 | | | SBGDI PLUS Bocht 90° | | | SBGDI PLUS Bocht 45° | | |
|-----|-------------------------|---------------|-----|----------------------|---------------|------|----------------------|---------------|------|
| | prijs | artikelnummer | % | prijs | artikelnummer | % | prijs | artikelnummer | % |
| 100 | 80,10 | 5140000500 | V17 | 38,95 | 5140000515 | V17a | 36,10 | 5140000508 | V17a |
| 125 | 89,15 | 5140000501 | V17 | 50,20 | 5140000516 | V17a | 44,40 | 5140000509 | V17a |
| 150 | 108,50 | 5140000502 | V17 | 68,70 | 5140000517 | V17a | 55,85 | 5140000510 | V17a |
| 160 | 130,45 | 5140000503 | V17 | 69,90 | 5140000518 | V17a | 59,25 | 5140000511 | V17a |
| 180 | 160,80 | 5140000504 | V17 | 92,60 | 5140000519 | V17a | 73,25 | 5140000512 | V17a |
| 200 | 164,35 | 5140000505 | V17 | 103,45 | 5140000520 | V17a | 81,65 | 5140000513 | V17a |
| 250 | 198,05 | 5140000506 | V17 | 150,35 | 5140000521 | V17a | 99,10 | 5140000514 | V17a |
| 315 | 281,25 | 5140000507 | V17 | 248,85 | 5140000524 | V17a | 128,55 | 5140000523 | V17a |
| 355 | 321,60 | 5140000550 | V17 | 278,20 | 5140000558 | V17a | 198,60 | 5140000556 | V17a |
| 400 | 358,70 | 5140000553 | V17 | 340,40 | 5140000554 | V17a | 227,65 | 5140000557 | V17a |

= standaard artikel, uit voorraad leverbaar (aantallen fluctueren)



STDI PLUS

| d1 = d2 | d3 | | | | | | | | | | | | | | |
|------------|-------|---------------|------|--------|---------------|------|-------|---------------|------|--------|---------------|------|--------|---------------|------|
| | 100 | | | 125 | | | 150 | | | 160 | | | 200 | | |
| | prijs | artikelnummer | % | prijs | artikelnummer | % | prijs | artikelnummer | % | prijs | artikelnummer | % | prijs | artikelnummer | % |
| 100 | 59,10 | 5140000525 | V17a | | | | | | | | | | | | |
| 125 | | | | 64,95 | 5140000526 | V17a | | | | | | | | | |
| 150 | | | | 99,65 | 5140000527 | V17a | 99,65 | 5140000528 | V17a | | | | | | |
| 160 | 86,80 | 5140000529 | V17a | 97,15 | 5140000530 | V17a | | | | 102,20 | 5140000531 | V17a | | | |
| 180 | | | | | | | | | | 130,10 | 5140000539 | V17a | 136,95 | 5140000532 | V17a |
| 200 | | | | 104,45 | 5140000533 | V17a | | | | 129,40 | 5140000534 | V17a | 148,15 | 5140000535 | V17a |
| 250 | | | | | | | | | | | | | | | |
| 315 | | | | | | | | | | | | | | | |
| 355 | | | | | | | | | | | | | | | |
| 400 | | | | | | | | | | | | | | | |

| d1 = d2 | d3 | | | | | | | | | | | |
|------------|--------|---------------|------|--------|---------------|------|--------|---------------|------|--------|---------------|------|
| | 250 | | | 315 | | | 355 | | | 400 | | |
| | prijs | artikelnummer | % | prijs | artikelnummer | % | prijs | artikelnummer | % | prijs | artikelnummer | % |
| 100 | | | | | | | | | | | | |
| 125 | | | | | | | | | | | | |
| 150 | | | | | | | | | | | | |
| 160 | | | | | | | | | | | | |
| 180 | | | | | | | | | | | | |
| 200 | | | | | | | | | | | | |
| 250 | 174,10 | 5140000536 | V17a | | | | | | | | | |
| 315 | 198,05 | 5140000537 | V17a | 298,05 | 5140000538 | V17a | | | | | | |
| 355 | | | | | | | 332,70 | 5140000559 | V17a | | | |
| 400 | | | | | | | | | | 401,50 | 5140000560 | V17a |



SDNDI PLUS

| d1 = d2 | d3 | | | | | | | | | | | | | | |
|------------|-------|---------------|------|-------|---------------|------|-------|---------------|------|-------|---------------|------|-------|---------------|------|
| | 125 | | | 150 | | | 160 | | | 180 | | | 200 | | |
| | prijs | artikelnummer | % | prijs | artikelnummer | % | prijs | artikelnummer | % | prijs | artikelnummer | % | prijs | artikelnummer | % |
| 150 | 38,30 | 5140000540 | V17a | | | | | | | | | | | | |
| 160 | 38,30 | 5140000541 | V17a | 38,30 | 5140000542 | V17a | | | | | | | | | |
| 180 | | | | | | | 51,60 | 5140000543 | V17a | | | | | | |
| 200 | | | | 50,20 | 5140000544 | V17a | 50,20 | 5140000545 | V17a | 57,40 | 5140000546 | V17a | | | |
| 250 | | | | | | | 63,80 | 5140000547 | V17a | | | | 63,80 | 5140000548 | V17a |
| 315 | | | | | | | | | | | | | | | |
| 355 | | | | | | | | | | | | | | | |
| 400 | | | | | | | | | | | | | | | |

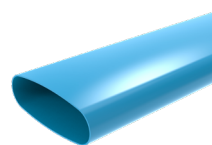
| d1 = d2 | d3 | | | | | | | | |
|------------|--------|---------------|------|--------|---------------|------|--------|---------------|------|
| | 250 | | | 315 | | | 355 | | |
| | prijs | artikelnummer | % | prijs | artikelnummer | % | prijs | artikelnummer | % |
| 150 | | | | | | | | | |
| 160 | | | | | | | | | |
| 180 | | | | | | | | | |
| 200 | | | | | | | | | |
| 250 | | | | | | | | | |
| 315 | 120,30 | 5140000549 | V17a | | | | | | |
| 355 | | | | 131,45 | 5140000561 | V17a | | | |
| 400 | | | | 164,75 | 5140000562 | V17a | 164,75 | 5140000555 | V17a |

= standaard artikel, uit voorraad leverbaar (aantallen fluctueren)

Wavin kunststof instortstelsysteem

Ventiza PVC ventilatiekanalen

| omschrijving | prijs | artikelnummer | % |
|----------------------------------------|--------|---------------|------|
| PVC Vent. Kanaal BL 195 L=5 Ovaal | 102,10 | 5120000236 | V03a |
| PVC Vent. Kanaal BL 235 L=5 Ovaal | 167,05 | 5120000237 | V03a |
| PVC Vent. Kanaal BL 80x1,5 L=4 Rond | 29,25 | 5120000238 | V03a |
| PVC Vent. Kanaal BL 125x2,5 L=5,5 Rond | 75,70 | 5120000234 | V03a |
| PVC Vent. Kanaal BL 160x2,5 L=5,5 Rond | 113,20 | 5120000235 | V03a |

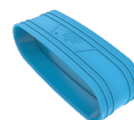


Ventiza PVC lijmmoffen

| omschrijving | prijs | artikelnummer | % |
|------------------------------|-------|---------------|------|
| PVC Vent. Lijmmof BL 195 M/M | 7,65 | 5120000223 | V03a |
| PVC Vent. Lijmmof BL 235 M/M | 15,80 | 5120000224 | V03a |
| PVC Vent. Lijmmof BL 80 M/M | 2,70 | 5120000225 | V03a |
| PVC Vent. Lijmmof BL 125 M/M | 6,25 | 5120000262 | V03a |
| PVC Vent. Lijmmof BL 160 M/M | 9,15 | 5120000263 | V03a |

Ventiza PVC overschuifmof

| omschrijving | prijs | artikelnummer | % |
|------------------------------------|-------|---------------|------|
| PVC Vent. Overschuifmof BL 195 M/M | 7,90 | 5120000254 | V03a |
| PVC Vent. Overschuifmof BL 235 M/M | 16,30 | 5120000255 | V03a |



Ventiza PVC bochten

| omschrijving | prijs | artikelnummer | % |
|--------------------------------|-------|---------------|------|
| PVC Vent. Bocht 45° BL 195 M/M | 23,50 | 5120000203 | V03a |
| PVC Vent. Bocht 45° BL 235 M/S | 30,40 | 5120000205 | V03a |
| PVC Vent. Bocht 45° BL 235 M/M | 30,70 | 5120000204 | V03a |
| PVC Vent. Bocht 90° BL 195 M/M | 27,65 | 5120000210 | V03a |
| PVC Vent. Bocht 90° BL 235 M/M | 44,85 | 5120000211 | V03a |
| PVC Vent. Bocht 45° BL 125 M/S | 9,20 | 5120000258 | V03a |
| PVC Vent. Bocht 45° BL 160 M/S | 23,65 | 5120000259 | V03a |
| PVC Vent. Bocht 90° BL 125 M/S | 9,70 | 5120000260 | V03a |
| PVC Vent. Bocht 90° BL 160 M/S | 24,15 | 5120000261 | V03a |

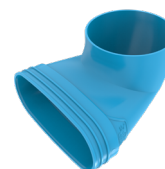


Ventiza PVC staande bochten

| omschrijving | prijs | artikelnummer | % |
|-------------------------------------------|-------|---------------|------|
| PVC Vent. Staande Bocht 45° BL 195x80 M/S | 19,50 | 5120000246 | V03a |
| PVC Vent. Staande Bocht 45° BL 195x80 M/M | 19,50 | 5120000248 | V03a |
| PVC Vent. Staande Bocht 45° BL 235x80 M/S | 24,50 | 5120000247 | V03a |
| PVC Vent. Staande Bocht 45° BL 235x80 M/M | 21,35 | 5120000249 | V03a |

Ventiza PVC eindstukken

| omschrijving | prijs | artikelnummer | % |
|--------------------------------------------|-------|---------------|------|
| PVC Vent. Eindst. 90° BL 195x125 H=50 M/M | 33,65 | 5120000219 | V03a |
| PVC Vent. Eindst. 90° BL 195x125 H=70 M/M | 33,65 | 5120000220 | V03a |
| PVC Vent. Eindst. 90° BL 195x125 H=100 M/M | 33,65 | 5120000221 | V03a |
| PVC Vent. Eindst. 90° BL 235x160 H=100 M/M | 37,45 | 5120000222 | V03a |
| PVC Vent. Eindst. 90° BL 125x80 H=50 M/M | 20,05 | 5120000216 | V03a |
| PVC Vent. Eindst. 90° BL 125x80 H=70 M/M | 20,05 | 5120000217 | V03a |
| PVC Vent. Eindst. 90° BL 125x80 H=100 M/M | 20,05 | 5120000218 | V03a |

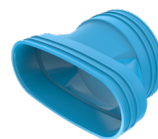


 = standaard artikel, uit voorraad leverbaar (aantallen fluctueren)

Wavin kunststof instortstelsysteem

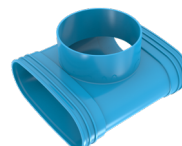
Ventiza PVC verlopen

| omschrijving | prijs | artikelnummer | % |
|----------------------------------|-------|---------------|------|
| PVC Vent. Verloop BL 235x195 M/M | 19,80 | 5120000245 | V03a |
| PVC Vent. Verloop BL 235x195 M/S | 19,45 | 5120000256 | V03a |
| PVC Vent. Verloop BL 195x80 M/M | 14,20 | 5120000243 | V03a |
| PVC Vent. Verloop BL 195x125 M/M | 27,55 | 5120000242 | V03a |
| PVC Vent. Verloop BL 235x160 M/M | 43,70 | 5120000244 | V03a |



Ventiza PVC T-stukken ovaal-rond

| omschrijving | prijs | artikelnummer | % |
|-----------------------------------------|-------|---------------|------|
| PVC Vent. T-stuk BL 195x125 H=50 mm 3M | 29,20 | 5120000229 | V03a |
| PVC Vent. T-stuk BL 195x125 H=70 mm 3M | 29,20 | 5120000230 | V03a |
| PVC Vent. T-stuk BL 195x125 H=100 mm 3M | 29,20 | 5120000228 | V03a |
| PVC Vent. T-stuk BL 235x160 3M | 59,80 | 5120000251 | V03a |
| PVC Vent. T-stuk BL 195x80 M/M/S | 34,70 | 5120000253 | V03a |
| PVC Vent. T-stuk BL 195x80 3M | 34,70 | 5120000252 | V03a |
| PVC Vent. T-stuk BL 195x160 3M | 51,30 | 5120000250 | V03a |



Ventiza PVC T-stukken ovaal

| omschrijving | prijs | artikelnummer | % |
|------------------------------------|-------|---------------|------|
| PVC Vent. T-stuk 90° BL 195x195 3M | 41,10 | 5120000226 | V03a |
| PVC Vent. T-stuk 90° BL 235x235 3M | 57,20 | 5120000227 | V03a |



Ventiza PVC eindkappen

| omschrijving | prijs | artikelnummer | % |
|----------------------------------|-------|---------------|------|
| PP Vent. Eindkap Kanaal 195x80 | 3,45 | 5120000214 | V03a |
| PP Vent. Eindkap Hulpstuk 195x80 | 3,50 | 5120000212 | V03a |
| PP Vent. Eindkap Kanaal 235x80 | 4,60 | 5120000215 | V03a |
| PP Vent. Eindkap Hulpstuk 235x80 | 4,60 | 5120000213 | V03a |
| PVC Vent. Eindkap rond 80 mm | 1,50 | 5120000270 | V03a |
| PVC Vent. Eindkap rond 125 mm | 1,70 | 5120000271 | V03a |
| PVC Vent. Eindkap rond 160 mm | 2,65 | 5120000272 | V03a |



Ventiza PVC T-stukken rond

| omschrijving | prijs | artikelnummer | % |
|--------------------------------|-------|---------------|------|
| PVC Vent. T-stuk 90° BL 125 3M | 14,60 | 5120000268 | V03a |
| PVC Vent. T-stuk 90° BL 160 3M | 30,10 | 5120000269 | V03a |



Wavin AS+ Geluidsarme Beugels voor fixatie van standleidingen

| omschrijving | prijs | artikelnummer | % |
|--------------------------------------|-------|---------------|------|
| AS+ Geluidsarme Beugel BL 125 M8/M10 | 12,50 | 5120000200 | V03a |
| AS+ Geluidsarme Beugel BL 160 M8/M10 | 14,15 | 5120000201 | V03a |



Spleetvullende lijm

| omschrijving | prijs | artikelnummer | % |
|-------------------------------------|--------|---------------|------|
| Griffon RU-22 Hard PVC Lijm 1L | 65,45 | 1150000260 | V03a |
| Griffon RU-22 Hard PVC Lijm 500ml | 38,95 | 1150000261 | V03a |
| Griffon RU-22 Hard PVC Lijm 5L Blik | 199,05 | 1150000262 | V03a |
| Griffon PVC reiniger 1000cc | 33,60 | 1150000263 | V03a |
| Griffon PVC reiniger 5000cc | 131,75 | 1150000264 | V03a |



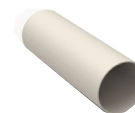
= standaard artikel, uit voorraad leverbaar (aantallen fluctueren)

Easyflex

V16 - Renson

Easyflex instortkanaal

| omschrijving | prijs | artikelnummer | % |
|----------------------------------------------------|-------|---------------|-----|
| Easyflex ronde buis Ø 125 mm L = 3000 mm | 31,40 | 5330000014 | V16 |
| Easyflex ronde buis Ø 80 mm L = 3000 mm | 22,53 | 5330000015 | V16 |
| Easyflex vast ovaal kanaal 135 x 55 mm L = 3000 mm | 29,07 | 5330000017 | V16 |



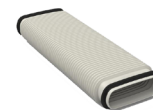
Easyflex instortkanaal koppelstukken

| omschrijving | prijs | artikelnummer | % |
|---------------------------------------------|-------|---------------|-----|
| Easyflex betondoorrover Ø 125 mm L = 0,25 m | 3,41 | 5330000000 | V16 |
| Easyflex betondoorrover Ø 80 mm L = 0,25 m | 3,00 | 5330000001 | V16 |
| Easyflex koppelstuk met rubbers Ø 125 mm | 5,34 | 5330000007 | V16 |
| Easyflex koppelstuk met rubbers Ø 80 mm | 5,34 | 5330000008 | V16 |
| Easyflex recht dubbel verloopstuk Ø 125 mm | 40,30 | 5330000011 | V16 |
| Betondoorrover kit Ø 80 mm | 23,95 | 5330000025 | V16 |
| Betondoorrover kit Ø 125 mm | 31,48 | 5330000026 | V16 |



Easyflex instortkanaal 140 x 60 mm + accessoires

| omschrijving | prijs | artikelnummer | % |
|---------------------------------------------------------|--------|---------------|-----|
| Easyflex flexibel koppelstuk 140 x 60 mm | 25,39 | 5330000003 | V16 |
| Easyflex flexibel ovaal kanaal 140 x 60 mm L = 15000 mm | 201,26 | 5330000004 | V16 |
| Easyflex horizontale bocht 140 x 60 mm 90° | 16,86 | 5330000005 | V16 |
| Easyflex koppelstuk met rubbers 140 x 60 mm | 3,20 | 5330000006 | V16 |
| Easyflex metalen overzetbeugel 140 x 60 mm | 1,91 | 5330000010 | V16 |
| Easyflex recht verloopstuk 140 x 60 mm > Ø125 mm | 25,43 | 5330000012 | V16 |
| Easyflex recht verloopstuk 140 x 60 mm > Ø80 mm | 16,95 | 5330000013 | V16 |
| Easyflex snelsluiting 140 x 60 mm | 0,97 | 5330000016 | V16 |
| Easyflex verticale bocht 140 x 60 mm 90° | 15,23 | 5330000023 | V16 |
| Easyflex Y-Stuk 140 x 60 mm | 44,06 | 5330000024 | V16 |
| Kruisstuk pivot | 71,74 | 5330000029 | V16 |



Easyflex instortkanaal toebehoren

| omschrijving | prijs | artikelnummer | % |
|---------------------------------------------|-------|---------------|-----|
| Easyflex dubbele ventilaansluiting Ø 125 mm | 40,30 | 5330000002 | V16 |
| Easyflex ventilaansluiting Ø 125 mm | 24,36 | 5330000018 | V16 |
| Easyflex ventilaansluiting Ø 80 mm | 16,76 | 5330000019 | V16 |
| Easyflex verdeelbox | 95,65 | 5330000020 | V16 |
| Easyflex verdeelbox haaks | 95,65 | 5330000021 | V16 |
| Easyflex verdeelbox recht | 95,65 | 5330000022 | V16 |
| Inspectieluik | 24,63 | 5330000027 | V16 |
| Isolatieslang 140 x 60 x 13 mm | 55,60 | 5330000028 | V16 |



 = standaard artikel, uit voorraad leverbaar (aantallen fluctueren)

VIK Instortkanalen

V02 - 170 x 80 mm/220 x 80 mm/250 x 80 mm

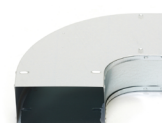
Recht kanaal

| B x H | L | prijs | artikelnummer | % |
|----------|------|-------|---------------|-----|
| 170 x 80 | 3000 | 65,15 | 5110000069 | V02 |
| 220 x 80 | 3000 | 75,80 | 5110000071 | V02 |
| 250 x 80 | 2500 | 80,30 | 5110000072 | V02 |



Bocht 90° stromend

| B x H | uitvoering | prijs | artikelnummer | % |
|----------|------------|-------|---------------|------|
| 170 x 80 | stromend | 23,40 | 5110000033 | V02a |
| 220 x 80 | stromend | 28,70 | 5110000037 | V02a |
| 250 x 80 | stromend | 60,25 | 5110000039 | V02a |

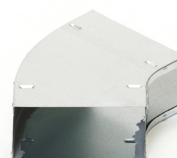


Bocht 60° stromend

| B x H | uitvoering | prijs | artikelnummer | % |
|----------|------------|-------|---------------|------|
| 170 x 80 | stromend | 32,50 | 5110000257 | V02a |
| 220 x 80 | stromend | 42,05 | 5110000259 | V02a |
| 250 x 80 | stromend | 60,25 | 5110000297 | V02a |

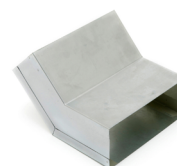
Bocht 45° stromend/haaks/staand

| B x H | uitvoering | prijs | artikelnummer | % |
|----------|------------|-------|---------------|------|
| 170 x 80 | stromend | 22,75 | 5110000032 | V02a |
| 220 x 80 | stromend | 27,95 | 5110000036 | V02a |
| 250 x 80 | stromend | 54,60 | 5110000038 | V02a |



| | | | | |
|----------|-------|-------|------------|------|
| 170 x 80 | haaks | 30,70 | 5110000144 | V02a |
| 220 x 80 | haaks | 37,65 | 5110000028 | V02a |
| 250 x 80 | haaks | 48,45 | 5110000251 | V02a |

| | | | | |
|----------|--------|-------|------------|------|
| 170 x 80 | staand | 32,95 | 5111000070 | V02a |
| 220 x 80 | staand | 37,65 | 5111000025 | V02a |
| 250 x 80 | staand | 39,85 | 5111000065 | V02a |

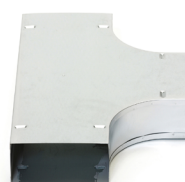


Bocht 30° stromend

| B x H | uitvoering | prijs | artikelnummer | % |
|----------|------------|-------|---------------|------|
| 170 x 80 | stromend | 32,50 | 5110000256 | V02a |
| 220 x 80 | stromend | 42,05 | 5110000253 | V02a |
| 250 x 80 | stromend | 32,50 | 5110000295 | V02a |

T-stuk 90° stromend

| B x H | uitvoering | prijs | artikelnummer | % |
|----------|------------|-------|---------------|------|
| 170 x 80 | stromend | 35,85 | 5110000112 | V02a |
| 220 x 80 | stromend | 43,25 | 5110000114 | V02a |
| 250 x 80 | stromend | 76,05 | 5110000115 | V02a |



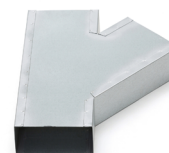
= standaard artikel, uit voorraad leverbaar (aantallen fluctueren)

VIK Instortkanalen

V02 - 170 x 80 mm/220 x 80 mm/250 x 80 mm

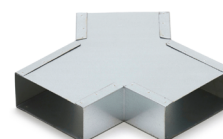
T -stuk 45°

| B x H | uitvoering | prijs | artikelnummer | % |
|----------|------------|-------|---------------|------|
| 170 x 80 | haaks | 46,65 | 5110000175 | V02a |
| 220 x 80 | haaks | 50,65 | 5110000177 | V02a |
| 250 x 80 | haaks | 52,85 | 5110000178 | V02a |



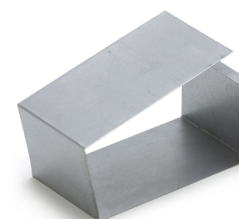
Y -stuk 45°

| B x H | uitvoering | prijs | artikelnummer | % |
|----------|------------|-------|---------------|------|
| 170 x 80 | haaks | 44,10 | 5110000305 | V02a |
| 220 x 80 | haaks | 61,95 | 5110000090 | V02a |
| 250 x 80 | haaks | 50,05 | 5110000307 | V02a |



Manchet

| B x H | L | prijs | artikelnummer | % |
|----------|-----|-------|---------------|------|
| 170 x 80 | 80 | 4,20 | 5110000095 | V02a |
| 170 x 80 | 200 | 4,45 | 5110000096 | V02a |
| 220 x 80 | 80 | 5,30 | 5110000099 | V02a |
| 220 x 80 | 200 | 5,75 | 5110000100 | V02a |
| 250 x 80 | 80 | 6,25 | 5110000101 | V02a |
| 250 x 80 | 200 | 6,55 | 5110000102 | V02a |



Einddeksel

| B x H | prijs | artikelnummer | % |
|----------|-------|---------------|------|
| 170 x 80 | 6,25 | 5110000047 | V02a |
| 220 x 80 | 9,00 | 5110000049 | V02a |
| 250 x 80 | 9,00 | 5110000050 | V02a |



Deksel met stuts diam, 80 mm

| B x H | prijs | artikelnummer | % |
|----------|-------|---------------|------|
| 170 x 80 | 18,25 | 5110000042 | V02a |
| 220 x 80 | 21,00 | 5110000044 | V02a |
| 250 x 80 | 24,40 | 5110000045 | V02a |



PVC deksel

| D | prijs | artikelnummer | % |
|-----|-------|---------------|------|
| 80 | 2,60 | 5110000248 | V02a |
| 100 | 1,90 | 5110000103 | V02a |
| 125 | 2,65 | 5110000104 | V02a |
| 150 | 4,20 | 5110000105 | V02a |
| 160 | 4,55 | 5110000106 | V02a |
| 200 | 4,95 | 5110000300 | V02a |
| 250 | 5,50 | 5110000301 | V02a |
| 315 | 7,00 | 5110000302 | V02a |



 = standaard artikel, uit voorraad leverbaar (aantallen fluctueren)

VIK Instortkanalen

V02 - 170 x 80 mm/220 x 80 mm/250 x 80 mm

Aansluitstuts

| D | H | prijs | artikelnummer | % |
|-----|-----|-------|---------------|------|
| 100 | 50 | 3,50 | 5110000000 | V02a |
| 100 | 60 | 3,50 | 5110000001 | V02a |
| 100 | 70 | 3,70 | 5110000002 | V02a |
| 100 | 80 | 3,70 | 5110000003 | V02a |
| 100 | 90 | 5,30 | 5110000143 | V02a |
| 100 | 100 | 5,30 | 5110000004 | V02a |
| 125 | 50 | 4,50 | 5110000005 | V02a |
| 125 | 60 | 4,50 | 5110000006 | V02a |
| 125 | 70 | 5,00 | 5110000007 | V02a |
| 125 | 80 | 5,00 | 5110000008 | V02a |
| 125 | 90 | 5,40 | 5110000009 | V02a |
| 125 | 100 | 5,40 | 5110000010 | V02a |
| 125 | 110 | 5,80 | 5110000011 | V02a |
| 125 | 120 | 5,80 | 5110000012 | V02a |
| 125 | 130 | 6,80 | 5110000278 | V02a |
| 125 | 150 | 6,50 | 5111000021 | V02a |
| 150 | 60 | 5,75 | 5110000013 | V02a |
| 150 | 70 | 5,75 | 5110000014 | V02a |
| 150 | 80 | 5,75 | 5110000015 | V02a |
| 150 | 90 | 6,00 | 5110000016 | V02a |
| 150 | 100 | 6,00 | 5110000017 | V02a |
| 160 | 50 | 5,75 | 5110000286 | V02a |
| 160 | 60 | 5,75 | 5110000018 | V02a |
| 160 | 70 | 5,75 | 5110000019 | V02a |
| 160 | 80 | 5,75 | 5110000020 | V02a |
| 160 | 90 | 6,10 | 5110000021 | V02a |
| 160 | 100 | 6,10 | 5110000022 | V02a |
| 160 | 120 | 7,10 | 5111000060 | V02a |
| 160 | 150 | 8,05 | 5110000279 | V02a |
| 160 | 200 | 9,05 | 5111000219 | V02a |
| 180 | 70 | 6,15 | 5110000023 | V02a |
| 180 | 80 | 6,15 | 5110000024 | V02a |
| 180 | 100 | 6,70 | 5110000025 | V02a |
| 180 | 120 | 7,25 | 5111000210 | V02a |
| 180 | 150 | 7,35 | 5111000125 | V02a |
| 200 | 80 | 7,20 | 5110000294 | V02a |
| 200 | 90 | 7,60 | 5110000293 | V02a |
| 200 | 200 | 9,70 | 5111000220 | V02a |



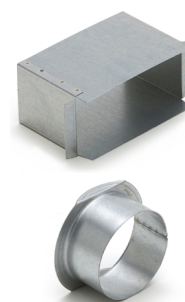
Aansluitstuts geperforeerd

| D | H | prijs | artikelnummer | % |
|-----|----|-------|---------------|------|
| 125 | 80 | 7,80 | 5111000160 | V02a |

Haakse zijaansluiting

| aftakmaat B x H | kanaalmaat B x H | prijs | artikelnummer | 5 |
|-----------------|------------------|-------|---------------|------|
| 170 x 80 | 170/250 x 80 | 10,00 | 5110000055 | V02a |
| 220 x 80 | 220/250 x 80 | 15,15 | 5110000057 | V02a |
| 250 x 80 | 250 x 80 | 19,45 | 5110000059 | V02a |

| D | Kanaalmaat B x H | prijs | artikelnummer | % |
|----|------------------|-------|---------------|------|
| 80 | 170/250 x 80 | 6,10 | 5110000051 | V02a |



= standaard artikel, uit voorraad leverbaar (aantallen fluctueren)

VIK Instortkanalen

V02 - 170 x 80 mm/220 x 80 mm/250 x 80 mm

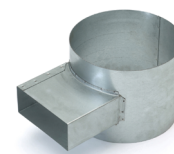
Instortpot met stalen deksel IPS

| d1 | d2 | H | prijs | artikelnummer | % |
|------------------------------|-------|-----|-------|---------------|------|
| 100 | 80 | 80 | 23,90 | 5110000296 | V02a |
| 125 | 80 | 50 | 18,75 | 5110000450 | V02a |
| 125 | 80 | 60 | 18,75 | 5110000198 | V02a |
| 125 | 80 | 70 | 18,75 | 5110000452 | V02a |
| 125 | 80 | 80 | 18,75 | 5110000453 | V02a |
| 125 | 80 | 90 | 23,00 | 5110000204 | V02a |
| 125 | 80 | 100 | 23,00 | 5110000455 | V02a |
| 125 | 80 | 110 | 23,90 | 5110000262 | V02a |
| 125 | 80 | 120 | 23,90 | 5110000457 | V02a |
| 125 | 80 | 125 | 23,90 | 5110000194 | V02a |
| 125 | 80 | 150 | 26,55 | 5110000287 | V02a |
| Met dubbele aftakking | | | | | |
| d1 | d2/d3 | H | prijs | artikelnummer | % |
| 125 | 80-80 | 50 | 25,00 | 5110000208 | V02a |
| 125 | 80-80 | 60 | 25,00 | 5110000210 | V02a |
| 125 | 80-80 | 70 | 25,00 | 5110000212 | V02a |
| 125 | 80-80 | 80 | 25,00 | 5110000214 | V02a |
| 125 | 80-80 | 90 | 27,05 | 5110000216 | V02a |
| 125 | 80-80 | 100 | 27,05 | 5110000206 | V02a |



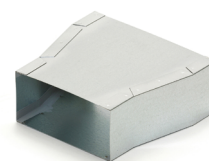
Instortbus met rechthoekige aftakking

| d | B2 x H2 | H | prijs | artikelnummer | % |
|-----|----------|-----|-------|---------------|------|
| 180 | 170 x 80 | 300 | 76,75 | 5110000309 | V02 |
| 250 | 220 x 80 | 300 | 79,10 | 5110000313 | V02a |
| 315 | 250 x 80 | 300 | 79,10 | 5110000314 | V02a |



Verloop RHV rechthoekig

| B1 x H1 | B2 x H2 | prijs | artikelnummer | % |
|----------|----------|-------|---------------|------|
| 220 x 80 | 170 x 80 | 34,25 | 5110000134 | V02a |
| 250 x 80 | 170 x 80 | 40,70 | 5110000168 | V02a |
| 250 x 80 | 220 x 80 | 40,70 | 5110000170 | V02a |



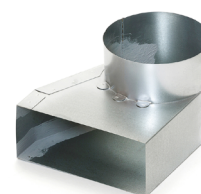
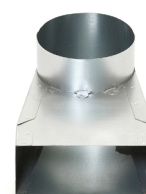
 = standaard artikel, uit voorraad leverbaar (aantallen fluctueren)

VIK Instortkanalen

V02 - 170 x 80 mm/220 x 80 mm/250 x 80 mm

Lepe hoeken

| B x H | uitvoering | D | prijs | artikelnummer | % |
|----------|------------|-----|-------|---------------|------|
| 170 x 80 | L | 125 | 55,35 | 5110000077 | V02a |
| 170 x 80 | R | 125 | 55,35 | 5110000079 | V02a |
| 170 x 80 | Sym | 125 | 55,35 | 5110000405 | V02a |
| 170 x 80 | L | 150 | 56,10 | 5110000078 | V02a |
| 170 x 80 | R | 150 | 56,10 | 5110000080 | V02a |
| 170 x 80 | Sym | 150 | 56,10 | 5110000082 | V02a |
| 170 x 80 | Sym | 160 | 86,90 | 5110000085 | V02a |
| 220 x 80 | L | 125 | 61,30 | 5110000221 | V02a |
| 220 x 80 | R | 125 | 61,30 | 5110000222 | V02a |
| 220 x 80 | Sym | 125 | 61,30 | 5110000417 | V02a |
| 220 x 80 | L | 150 | 62,00 | 5110000088 | V02a |
| 220 x 80 | R | 150 | 62,00 | 5110000089 | V02a |
| 220 x 80 | Sym | 150 | 62,00 | 5110000091 | V02a |
| 220 x 80 | L | 160 | 62,90 | 5110000149 | V02a |
| 220 x 80 | R | 160 | 62,90 | 5110000150 | V02a |
| 220 x 80 | Sym | 160 | 62,90 | 5110000423 | V02a |
| 250 x 80 | L | 125 | 66,05 | 5110000151 | V02a |
| 250 x 80 | R | 125 | 66,05 | 5110000224 | V02a |
| 250 x 80 | Sym | 125 | 66,05 | 5110000226 | V02a |
| 250 x 80 | L | 150 | 68,05 | 5110000152 | V02a |
| 250 x 80 | R | 150 | 68,05 | 5110000154 | V02a |
| 250 x 80 | Sym | 150 | 68,05 | 5110000156 | V02a |
| 250 x 80 | L | 160 | 68,90 | 5110000153 | V02a |
| 250 x 80 | R | 160 | 68,90 | 5110000155 | V02a |
| 250 x 80 | Sym | 160 | 68,90 | 5110000157 | V02a |
| 250 x 80 | L | 180 | 71,25 | 5110000223 | V02a |
| 250 x 80 | R | 180 | 71,25 | 5110000225 | V02a |
| 250 x 80 | Sym | 180 | 71,25 | 5110000227 | V02a |



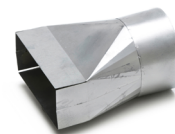
 = standaard artikel, uit voorraad leverbaar (aantallen fluctueren)

VIK Instortkanalen

V02 - 170 x 80 mm/220 x 80 mm/250 x 80 mm

Verloop RHOR rechthoekig naar rond

| B x H | d | uitvoering | prijs | artikelnummer | % |
|----------|-----|------------|-------|---------------|------|
| 170 x 80 | 125 | BZV | 63,40 | 5110000119 | V02a |
| 170 x 80 | 125 | Sym | 63,40 | 5110000120 | V02a |
| 170 x 80 | 125 | SZV | 63,40 | 5110000121 | V02a |
| 220 x 80 | 125 | BZV | 64,70 | 5110000122 | V02a |
| 220 x 80 | 125 | Sym | 64,70 | 5110000123 | V02a |
| 220 x 80 | 125 | SZV | 64,70 | 5110000124 | V02a |
| 220 x 80 | 150 | BZV | 67,85 | 5110000125 | V02a |
| 220 x 80 | 150 | Sym | 67,85 | 5110000126 | V02a |
| 220 x 80 | 150 | SZV | 67,85 | 5110000164 | V02a |
| 220 x 80 | 160 | BZV | 67,85 | 5110000127 | V02a |
| 220 x 80 | 160 | Sym | 67,85 | 5110000128 | V02a |
| 220 x 80 | 160 | SZV | 67,85 | 5110000129 | V02a |
| 250 x 80 | 125 | BZV | 69,55 | 5110000239 | V02a |
| 250 x 80 | 125 | Sym | 69,55 | 5110000240 | V02a |
| 250 x 80 | 125 | SZV | 69,55 | 5110000241 | V02a |
| 250 x 80 | 150 | BZV | 73,10 | 5110000242 | V02a |
| 250 x 80 | 150 | Sym | 73,10 | 5110000243 | V02a |
| 250 x 80 | 150 | SZV | 73,10 | 5110000244 | V02a |
| 250 x 80 | 160 | BZV | 76,05 | 5110000245 | V02a |
| 250 x 80 | 160 | Sym | 76,05 | 5110000246 | V02a |
| 250 x 80 | 160 | SZV | 76,05 | 5110000247 | V02a |
| 250 x 80 | 180 | BZV | 70,35 | 5110000130 | V02a |
| 250 x 80 | 180 | Sym | 70,35 | 5110000165 | V02a |
| 250 x 80 | 180 | SZV | 70,35 | 5110000166 | V02a |



= standaard artikel, uit voorraad leverbaar (aantallen fluctueren)

Kanaal & overspraakdempers

S01 - Kanaaldempers - Solid Air® Climate Solutions

| omschrijving | prijs | artikelnummer | % |
|--------------------|-------|---------------|-----|
| Inno demper 100 RP | 10,00 | 9350000001 | S07 |
| Inno demper 125 RP | 13,00 | 9350000003 | S07 |
| Inno demper 160 RP | 18,00 | 9350000005 | S07 |
| Inno demper 200 RP | 27,00 | 9350000006 | S07 |
| Inno demper 250 RP | 57,00 | 9350000007 | S07 |
| Inno demper 315 RP | 82,00 | 9350000008 | S07 |



V11 - Overspraakdempers - Zehnder

| omschrijving | prijs | artikelnummer | % |
|--------------|-------|---------------|------|
| SGD 1 100 | 21,30 | 5200000064 | V11a |
| SGD 1 125 | 21,30 | 5200000065 | V11a |
| SGD 2 125 | 21,30 | 5200000066 | V11a |



 = standaard artikel, uit voorraad leverbaar (aantallen fluctueren)

Prefab-schoorstenen

Prefab-schoorstenen per project op aanvraag.



 = standaard artikel, uit voorraad leverbaar (aantallen fluctueren)

Ventielen en wasemkappen

V11 - Afzuigventielen - Brink

| omschrijving | prijs | artikelnummer | % |
|------------------------|-------|---------------|------|
| BKAV 125 afzuigventiel | 22,50 | 5200000000 | V15a |

V11 - Afzuigventielen - Velu

| afzuigventielen, staal | | | | | | | |
|------------------------|-------|---------------|------|------------|-------|---------------|------|
| omschrijving | prijs | artikelnummer | % | montagebus | prijs | artikelnummer | % |
| KGEB 100 | 18,05 | 5200000006 | V05a | KGEZ 100 | 4,00 | 5200000009 | V05a |
| KGEB 125 | 19,45 | 5200000007 | V05a | KGEZ 125 | 4,00 | 5200000010 | V05a |

| afzuigventielen, staal | | | | | | | |
|------------------------|-------|---------------|------|------------|-------|---------------|------|
| omschrijving | prijs | artikelnummer | % | montagebus | prijs | artikelnummer | % |
| KSO 100 | 8,50 | 5200000012 | V05a | KKL 100 | 1,55 | 5200000172 | V05a |
| KSO 125 | 11,05 | 5200000013 | V05a | KKL 125 | 1,90 | 5200000173 | V05a |
| | | | | KKL 150 | 2,55 | 5200000174 | V05a |
| KSO 160 | 14,80 | 5200000015 | V05a | KKL 160 | 2,35 | 5200000175 | V05a |
| KSO 200 | 22,15 | 5200000016 | V05a | KKL 200 | 3,20 | 5200000176 | V05a |

| afzuigventielen met klemveer, staal | | | |
|-------------------------------------|-------|---------------|------|
| omschrijving | prijs | artikelnummer | % |
| KSO-J 100 | 13,05 | 5200000017 | V05a |
| KSO-J 125 | 15,45 | 5200000018 | V05a |
| KSO-J 160 | 21,40 | 5200000020 | V05a |
| KSO-J 200 | 28,85 | 5200000021 | V05a |

| afzuigventielen, staal | | | | | | | |
|------------------------|-------|---------------|------|------------|-------|---------------|------|
| omschrijving | prijs | artikelnummer | % | montagebus | prijs | artikelnummer | % |
| NK 100 | 5,30 | 5200000050 | V05a | KKL 100 | 1,55 | 5200000172 | V05a |
| NK 125 | 6,35 | 5200000051 | V05a | KKL 125 | 1,90 | 5200000173 | V05a |

| afzuigventielen met klemveer, staal | | | |
|-------------------------------------|-------|---------------|------|
| omschrijving | prijs | artikelnummer | % |
| NK-J 100 | 8,35 | 5200000055 | V05a |
| NK-J 125 | 9,70 | 5200000056 | V05a |

| afzuigventielen, kunststof | | | |
|----------------------------|-------|---------------|------|
| omschrijving | prijs | artikelnummer | % |
| VVK - M 100 | 6,40 | 5200000112 | V05a |
| VVK - M 125 | 7,70 | 5200000113 | V05a |

V11 - Afzuigventielen - DEC

| afzuigventielen, kunststof | | | |
|----------------------------|-------|---------------|------|
| omschrijving | prijs | artikelnummer | % |
| DVLF 80 RAL 9003 | 7,85 | 5200000075 | V05a |
| DVLF 100 RAL 9003 | 11,40 | 5200000076 | V05a |
| DVLF 125 RAL 9003 | 12,90 | 5200000078 | V05a |
| DVLF 150/160 RAL 9003 | 14,25 | 5200000081 | V05a |
| DVLF 200 RAL 9003 | 19,85 | 5200000080 | V05a |



= standaard artikel, uit voorraad leverbaar (aantallen fluctueren)

Afzuigventielen

V11 - Zehnder

| afzuigventielen, kunststof - zelfregelend | | | |
|-------------------------------------------|--------|---------------|------|
| omschrijving | prijs | artikelnummer | % |
| Ventiel STR 125/30 | 17,40 | 5200000089 | V11a |
| Ventiel STR 125/45 | 17,40 | 5200000090 | V11a |
| Ventiel STR 125/60 | 17,70 | 5200000091 | V11a |
| Ventiel STR 125/75 | 17,70 | 5200000092 | V11a |
| Ventiel STR 125 15/30 | 35,20 | 5200000094 | V11a |
| Ventiel STR 125 20/75 | 35,20 | 5200000095 | V11a |
| Ventiel STR 125 30/90 | 35,20 | 5200000136 | V11a |
| Ventiel STR 125 45/105 | 35,90 | 5200000137 | V11a |
| Ventiel STR 125 45/120 | 35,90 | 5200000096 | V11a |
| Ventiel STR Hygro 15/75 | 205,00 | 5200000859 | V11a |
| Ventiel STRD 90/125 | 32,10 | 5200000861 | V11a |
| Ventiel STRD 120/125 | 32,10 | 5200000860 | V11a |
| Montagebus STR 125/99 | 5,50 | 5200000031 | V11a |
| Montagebus STR 125/125 | 5,50 | 5200000032 | V11a |



| afzuigventielen, kunststof | | | |
|--------------------------------|--------|---------------|------|
| omschrijving | prijs | artikelnummer | % |
| ComfoValve Luna E125 | 35,80 | 5200000865 | V11a |
| ComfoValve Luna E125, 24 stuks | 755,00 | 5200000866 | V11a |
| STC - 100/125 | 16,70 | 5200000067 | V11a |
| STK 1 100/125 | 10,80 | 5200000070 | V11a |



| afzuigventielen, staal | | | |
|------------------------|-------|---------------|------|
| omschrijving | prijs | artikelnummer | % |
| STV 1 125 | 19,50 | 5200000074 | V11a |



| | | | |
|---------------------------|-------|------------|------|
| Ventiel STB 1 100 verpakt | 28,40 | 5200000083 | V11a |
| Ventiel STB 1 125 verpakt | 28,40 | 5200000084 | V11a |
| Ventiel STB 2 125 verpakt | 47,60 | 5200000085 | V11a |

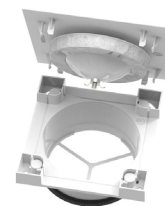


 = standaard artikel, uit voorraad leverbaar (aantallen fluctueren)

V16 - Renson

| afzuigventielen, kunststof | | | |
|-------------------------------------|-------|---------------|-----|
| omschrijving | prijs | artikelnummer | % |
| SQair pulsie ventiel Basic Ø 125 mm | 27,48 | 5310000124 | V16 |

| afzuigventielen, aluminium | | | |
|-----------------------------------------|-------|---------------|-----|
| omschrijving | prijs | artikelnummer | % |
| SQair Extractie ventiel Deluxe Ø 125 mm | 56,33 | 5310000123 | V16 |
| SQair Pulsie ventiel Deluxe Ø 125 mm | 56,33 | 5310000125 | V16 |



| aluminium designroosters voor Renson ventielen | | | |
|------------------------------------------------------|-------|---------------|-----|
| omschrijving | prijs | artikelnummer | % |
| XD25-50 AQUA, front 130 x 130 mm, Ø 80 (RAL 9010) | 13,53 | 5310000138 | V16 |
| XD25-50 ARTIST front 130 x 130 mm, Ø 80 (RAL 9010) | 13,53 | 5310000139 | V16 |
| XD25-50 DECO front 130 x 130 mm, Ø 80 (RAL 9010) | 13,53 | 5310000140 | V16 |
| XD25-50 DIAGONAL front 130 x 130 mm, Ø 80 (RAL 9010) | 13,53 | 5310000141 | V16 |
| XD25-50 PURO front 130 x 130 mm, Ø 80 (RAL 9010) | 13,53 | 5310000142 | V16 |
| XD25-50 SQUARE front 130 x 130 mm, Ø 80 (RAL 9010) | 13,53 | 5310000143 | V16 |
| XD75 AQUA front 170 x 170 mm, Ø 125 (RAL 9010) | 19,34 | 5310000144 | V16 |
| XD75 ARTIST front 170 x 170 mm, Ø 125 (RAL 9010) | 19,34 | 5310000145 | V16 |
| XD75 DECO front 170 x 170 mm, Ø 125 (RAL 9010) | 19,82 | 5310000146 | V16 |
| XD75 DIAGONAL front 170 x 170 mm, Ø 125 (RAL 9010) | 19,82 | 5310000147 | V16 |
| XD75 PURO front 170 x 170 mm, Ø 125 (RAL 9010) | 19,34 | 5310000148 | V16 |
| XD75 SQUARE front 170 x 170 mm, Ø 125 (RAL 9010) | 19,34 | 5310000149 | V16 |

 = standaard artikel, uit voorraad leverbaar (aantallen fluctueren)

Toevoerventielen

V11 - Brink

| omschrijving | prijs | artikelnummer | % |
|---------------------------|-------|---------------|------|
| BKTV 125 toevoerventiel | 32,25 | 5200000001 | V15a |
| Stalen toevoerventiel 100 | 18,75 | 5200000823 | V15a |
| Stalen toevoerventiel 125 | 22,75 | 5200000824 | V15a |
| Stalen toevoerventiel 150 | 30,75 | 5200000825 | V15a |
| Stalen toevoerventiel 160 | 45,50 | 5200000826 | V15a |



V11 - Flaktwoods

| toevoerventielen, staal | | | | | | | |
|-------------------------|-------|---------------|------|------------|-------|---------------|------|
| omschrijving | prijs | artikelnummer | % | montagebus | prijs | artikelnummer | % |
| KTS 100 | 15,40 | 5200000028 | V05a | KKL 100 | 1,55 | 5200000172 | V05a |
| KTS 125 | 17,40 | 5200000029 | V05a | KKL 125 | 1,90 | 5200000173 | V05a |



| toevoerventielen, staal | | | | | | | |
|-------------------------|-------|---------------|------|------------|-------|---------------|------|
| omschrijving | prijs | artikelnummer | % | montagebus | prijs | artikelnummer | % |
| NE 125 | 6,35 | 5200000039 | V05a | KKL 125 | 1,90 | 5200000173 | V05a |



| toevoerventielen met klemveer, staal | | | |
|--------------------------------------|-------|---------------|------|
| omschrijving | prijs | artikelnummer | % |
| NE-J 125 | 9,70 | 5200000045 | V05a |



| toevoerrooster, staal | | | |
|-----------------------|-------|---------------|------|
| omschrijving | prijs | artikelnummer | % |
| STQA 100 | 76,10 | 5200000071 | V05a |
| STQA 125 | 85,55 | 5200000072 | V05a |



V11 - Toevoerventielen - DEC International

| toevoerventielen met schone sector, kunststof | | | |
|-----------------------------------------------|-------|---------------|------|
| omschrijving | prijs | artikelnummer | % |
| RONDO 100 RAL9003 | 10,10 | 5200000102 | V05a |
| RONDO 125 RAL9003 | 10,95 | 5200000104 | V05a |
| RONDO 150/160 RAL9003 | 15,85 | 5200000108 | V05a |



= standaard artikel, uit voorraad leverbaar (aantallen fluctueren)

Toevoerventielen

V11 - Zehnder

| toevoerventielen, kunststof | | | |
|-------------------------------|--------|---------------|------|
| omschrijving | prijs | artikelnummer | % |
| ComfoValve Luna verpakt S125 | 35,80 | 5200000852 | V11a |
| ComfoValve Luna S125 24 stuks | 755,00 | 5200000851 | V11a |



 = standaard artikel, uit voorraad leverbaar (aantallen fluctueren)